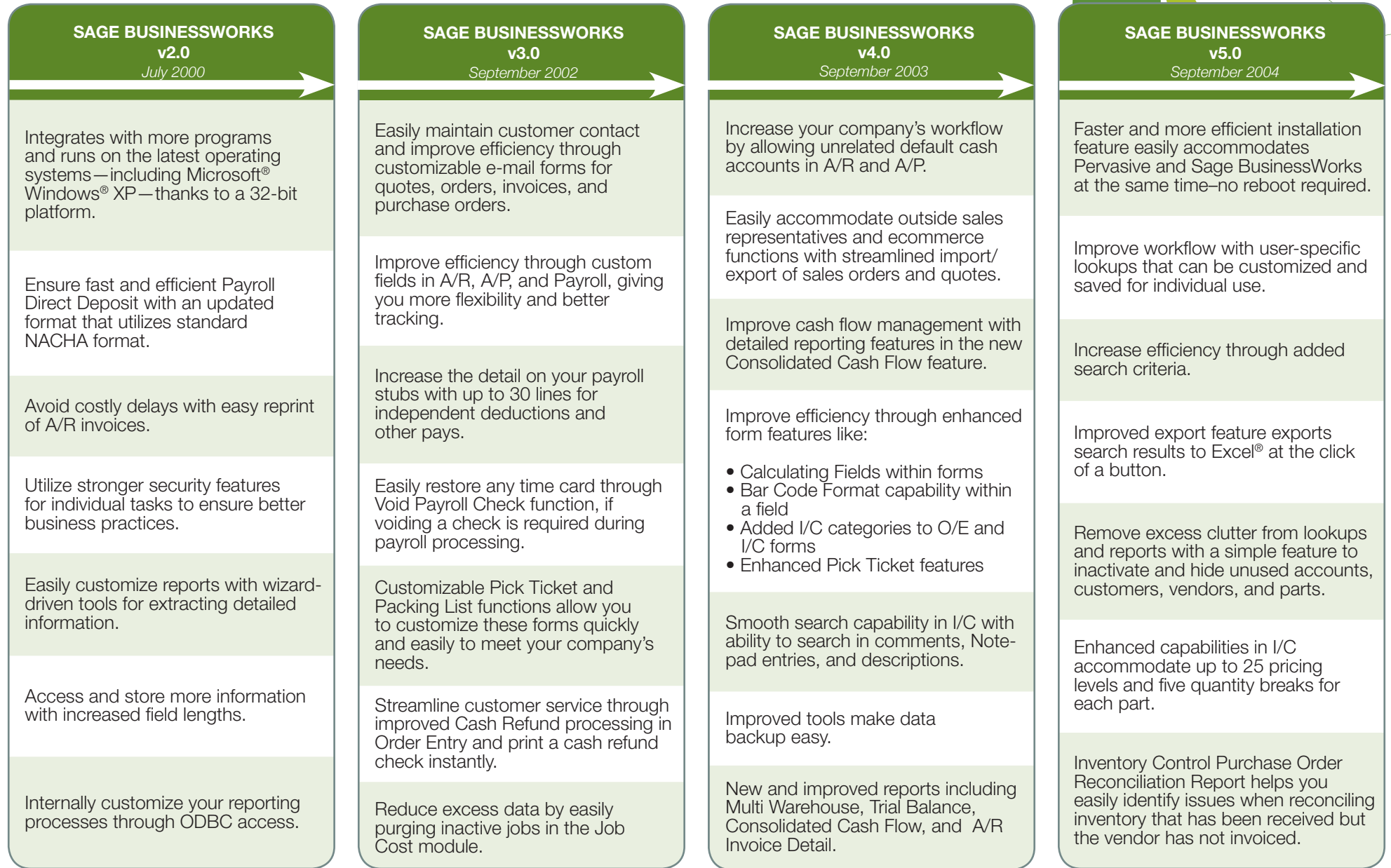


Sage BusinessWorks | Top Seven Enhancements

Version 2.0 to 2009



Sage BusinessWorks | Top Seven Enhancements

Version 2.0 to 2009

SAGE BUSINESSWORKS v6.0 <i>September 2005</i>	SAGE BUSINESSWORKS v7.0 <i>September 2006</i>	SAGE BUSINESSWORKS v8.0 <i>November 2007</i>	SAGE BUSINESSWORKS v2009 <i>October 2008</i>
<p>Easily use the most dynamic tool in customer relationship management with the new ACT! Link module that effortlessly links ACT! by Sage to Sage BusinessWorks.</p>	<p>Print tax forms to plain paper and eFile your state and federal tax forms, saving time and money.</p>	<p>Supported on today's most current platforms, including Microsoft's Windows Vista® operating system.</p>	<p>Transactions affecting the Open Credit and Deposit balances are stored individually, making the process of reconciling in A/R easier and more efficient.</p>
<p>Quickly navigate invoice details with the click of a button in both A/R and A/P, making it easier for you and your employees to make frequent balance inquiries.</p>	<p>Immediately post journal entries to the G/L through seamless integration with CompuPay</p>	<p>Save time with the Enter Payment option by easily entering full or partial payments on existing A/P invoices by credit card, EFT, or printed check. You can even pay one single vendor at a time!</p>	<p>Get a bird's eye view of all the transactions on your customer's open credit/deposit balances with newly detailed Open Credit/Deposit reports.</p>
<p>Year-end reporting is made simple and faster with the new Copy Company feature that quickly duplicates your selected company.</p>	<p>Quickly find important information, such as Open/Closed sales items, using the Filter Sales Order Line Items feature on Custom Reports/Exports.</p>	<p>Easily keep track of sales tax and ensure accuracy using the new feature that assigns sales tax IDs to a ship-to address.</p>	<p>Customer satisfaction is at your fingertips with the enhanced Customer Specific Pricing feature, which lets you assign individual part prices right in the Customer Maintenance screen.</p>
<p>Drop-shipping is now as easy as the click of a button to create a PO from a Sales Order, creating a link from the Sales Order to the PO for easier reporting.</p>	<p>Easily create new parts with the new Copy Parts button, which allows you to copy specific information to the new part.</p>	<p>Quickly and easily post adjustments to A/P invoices paid by credit card to account for interest accrued, annual fees, and other charges.</p>	<p>Save time by easily transferring Customer, Vendor, Part, and Employee information into a new company using the NEW option on each Export menu.</p>
<p>Save time by easily converting single Sales Orders to invoices at the click of a button.</p>	<p>Import Job Cost Transactions feature helps you quickly and easily bring in Job Cost transactions.</p>	<p>Void Payments by Vendor feature allows you to easily find and void credit card payments in A/P.</p>	<p>Streamline your payroll check-printing process by running your checks on check stock while you print zero-dollar direct deposit checks on plain paper in a single payroll check run.</p>
<p>Be wordy! Line Item Descriptions are now expanded to 1,000 characters.</p>	<p>EFT payments are recorded easily and accurately from the Enter Payments Screen to include EFT verification number, eliminating the need for a check number.</p>	<p>Easily access all transactions associated with an invoice from the Unpaid Balances hyperlink. You're one simple click away from any customer inquiry.</p>	<p>Add unlimited lines on purchase orders, quotes, sales orders, or invoices with the new Unlimited Line Items feature.</p>
<p>New editing capability on PO Description Lines allows you to modify your records easily according to your specifications.</p>	<p>Set up new users quickly and easily with Copy Security settings, which streamline the process and allow you to duplicate multiple user settings within a single company and between companies.</p>	<p>An enhanced Vendor Inquiry drill-down screen shows you all invoice information associated with your vendor from the Unpaid Balances hyperlink. Just one click takes you to any vendor inquiry.</p>	<p>Increased Sales Accounts on Order Entry transactions allows up to 999 distinct sales accounts per transaction.</p>